



argyll and bute
communityplanningpartnership

Contents

Foreword page 2

Who are we? page 3

How do we work? page 5

Community Planning in Argyll and Bute

Overarching aim: Argyll and Bute's economic success is built on a growing population page 6

Outcome 1 page 7

The economy is diverse and thriving

Outcome 2 page 11

We have infrastructure that supports sustainable growth

Outcome 3 page 13

Education, skills and training maximises opportunities for all

Outcome 4 page 17

Children and young people have the best possible start



Who are we?

Argyll and Bute Community Planning Partnership

The Chair of the CPP Management Committee is Chief Superintendent Hazel Hendren of Police Scotland. In 2017/2018, the Vice Chair of the Management Committee was Jim McNeil of the Scottish Fire and Rescue Service.



Hazel Hendren, Chair



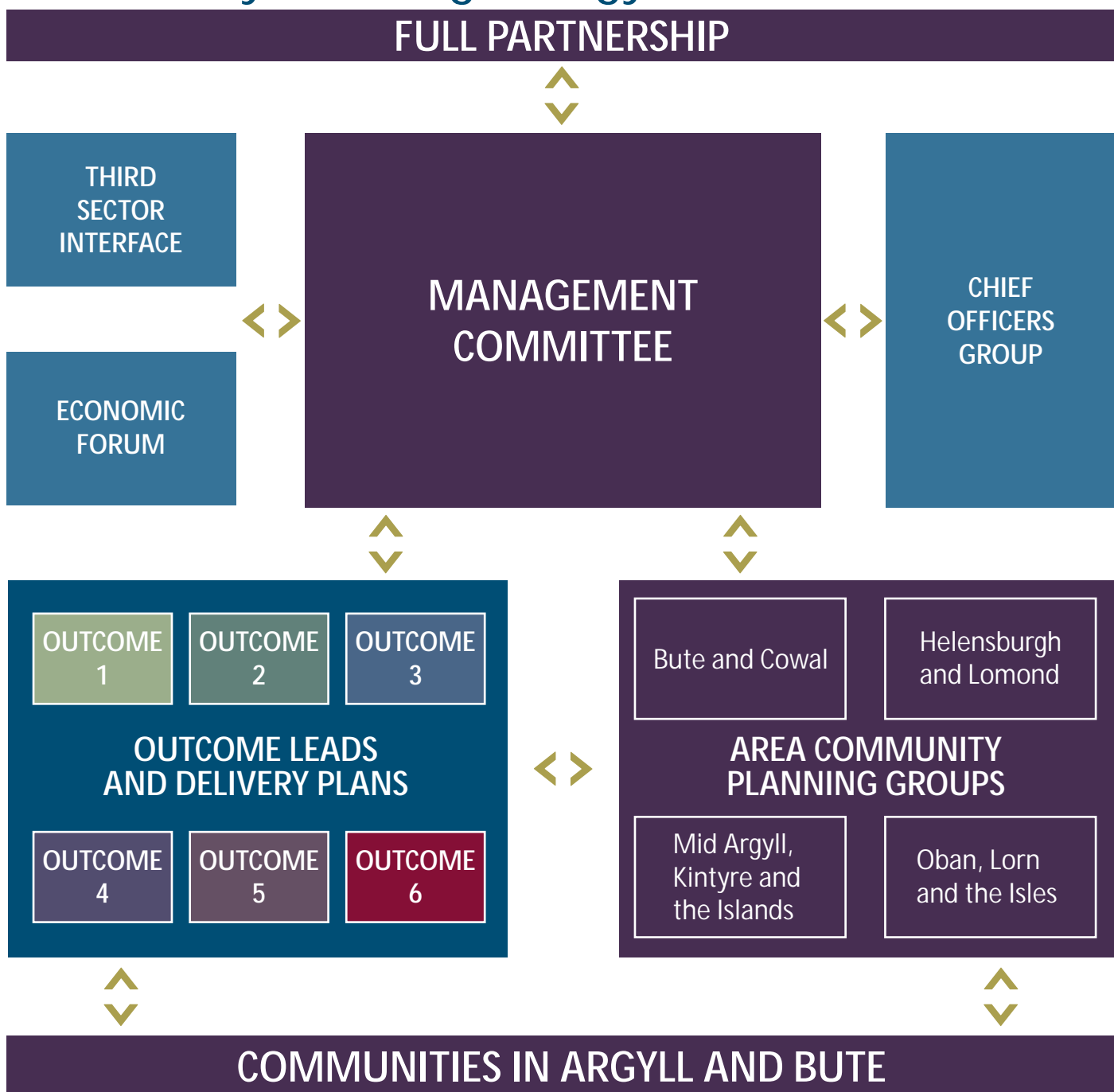
Jim McNeil, Vice Chair



Argyll and Bute Council	www.argyll-bute.gov.uk
Police Scotland	www.scotland.police.uk
Highlands and Islands Enterprise	www.hie.co.uk
NHS Highland	www.nhshighland.scot.nhs.uk
Argyll College UHI	www.argyll.uhi.ac.uk
Scottish Natural Heritage	www.snh.gov.uk
Skills Development Scotland	www.skillsdevelopmentscotland.co.uk
Scottish Enterprise	www.scottish-enterprise.com
Argyll and Bute TSI	www.argyllcommunities.org
Scottish Ambulance Service	www.scottishambulance.com
Loch Lomond & the Trossachs National Park	www.lochlomond-trossachs.org
Scottish Government	www.gov.scot
Department for Work and Pensions	www.gov.uk/government/organisations/department-for-work-pensions

How do we work?

Community Planning in Argyll and Bute



- Outcome 1 The economy is diverse and thriving
- Outcome 2 We have infrastructure which supports sustainable growth
- Outcome 3 Education, skills and training maximises opportunities for all
- Outcome 4 Children and young people have the best possible start
- Outcome 5 People live active, healthier and independent lives
- Outcome 6 People live in safer and stronger communities



Overarching aim:

Argyll and Bute's economic success is built on a growing population

The main purpose of the Community Planning Partnership (CPP) in Argyll and Bute is to address area's population fell by 320 (0.3%) people over the year to the end of June 2017 to 86,810.

The CPP is working together on a range of actions under six key outcome areas to attract people to live, work, visit, learn and do business in Argyll and Bute.

Rural Resettlement Fund

This innovative fund provided grants to eligible employers, self-employed people and new residents to assist with some of the expenses associated with relocating businesses or taking up employment within Argyll and Bute.

The Economic Growth section of the Council's Economic Development and Strategic Transportation service is responsible for disseminating the Rural Resettlement Fund which was launched on 31 October 2016 during Argyll Enterprise Week.

of 135 new residents relocated to Argyll and Bute; 98 adults and 37 children. The Rural Resettlement Fund was formally closed in May 2018.

A summary of the total RRF applications is presented in to as5ae fobocaw

Outcome 1

The economy is diverse and thriving

Projects include...

European Marine Science Park Business

Inveraray CARS Celebrates Completion

Food and Drink Promotion (Flavours of Argyll and Bute feature at Good Food Show)

Oban: A University Town

Key Statistics

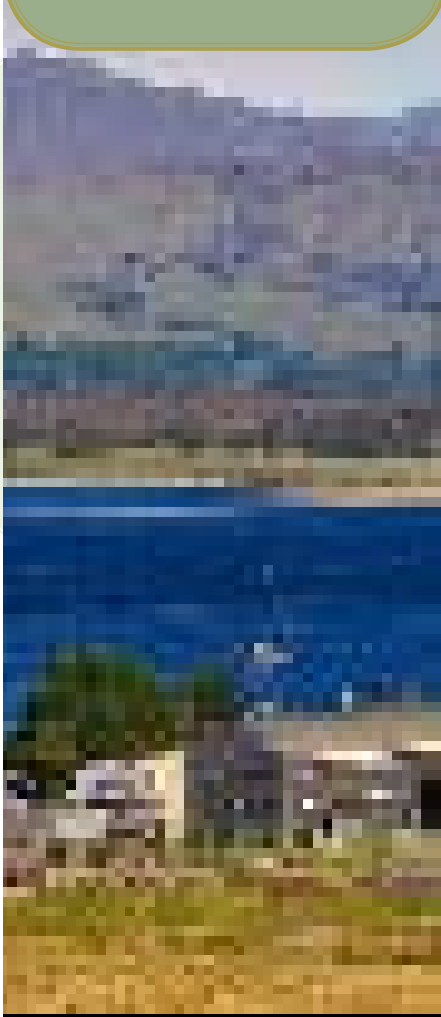
- 76.5% of working age people in Argyll and Bute were in employment compared to 74.5% for Scotland
- 78.43% of people in Argyll and Bute were economically active between July 2017 and June 2018 compared to 77.8% for Scotland
- The claimant count in Argyll and Bute was 1.7% compared to 2.7% for Scotland (Nomis October 2018)
- The % of people who were self-employed in Argyll and Bute was 12.2% compared to 8.2% for Scotland

European Marine Science Park Business

Highlands and Islands Enterprise has been leading the establishment and development of a thriving marine business cluster at the European Marine Science Park, site of the internationally renowned Scottish Association for Marine Science. Established in 2012, the site is now home to over 12 innovative businesses working in aquaculture, marine biotechnology and marine energy.

Events and seminars take place regularly and encourage interaction and sharing of ideas between businesses. A new co-working space "The Moorings" has recently been opened, providing further opportunities for collaboration and sharing of ideas.

With the success of the Park, work is underway on developing the detailed design for the next phase of development.





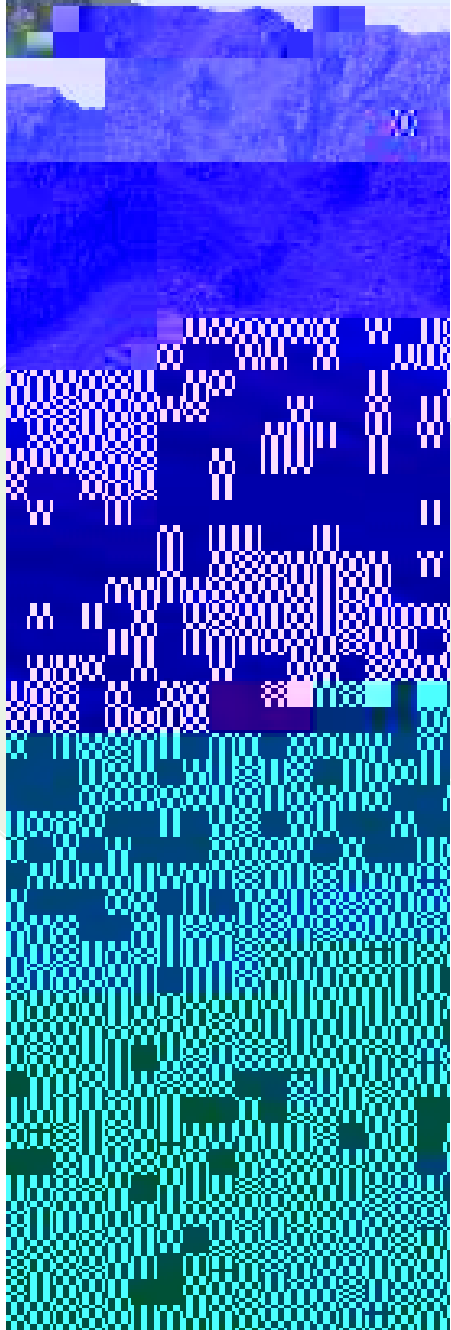
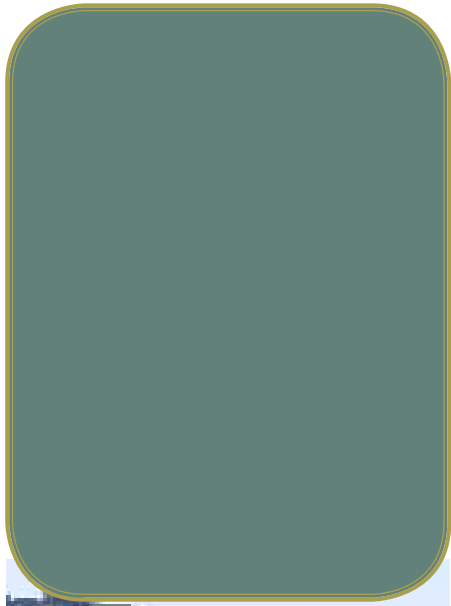
Food and Drink Promotion (Flavours of Argyll and Bute feature at Good Food Show)

The best of Argyll and Bute's food and drink was showcased by the Council, and nine local producers, to the thousands of people who visited the BBC Good Food Show at the Scottish Exhibition and Conference Centre in Glasgow.



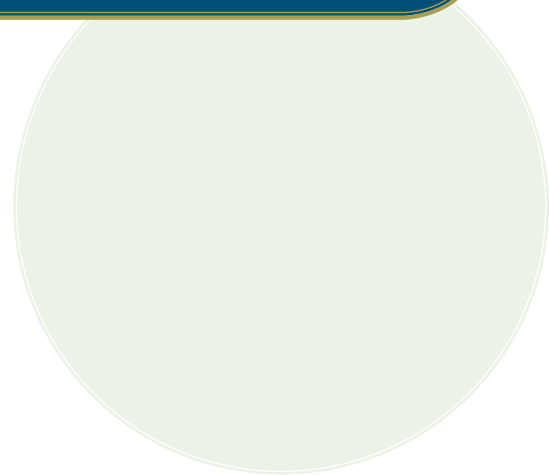
Outcome 2

We have infrastructure which supports sustainable growth



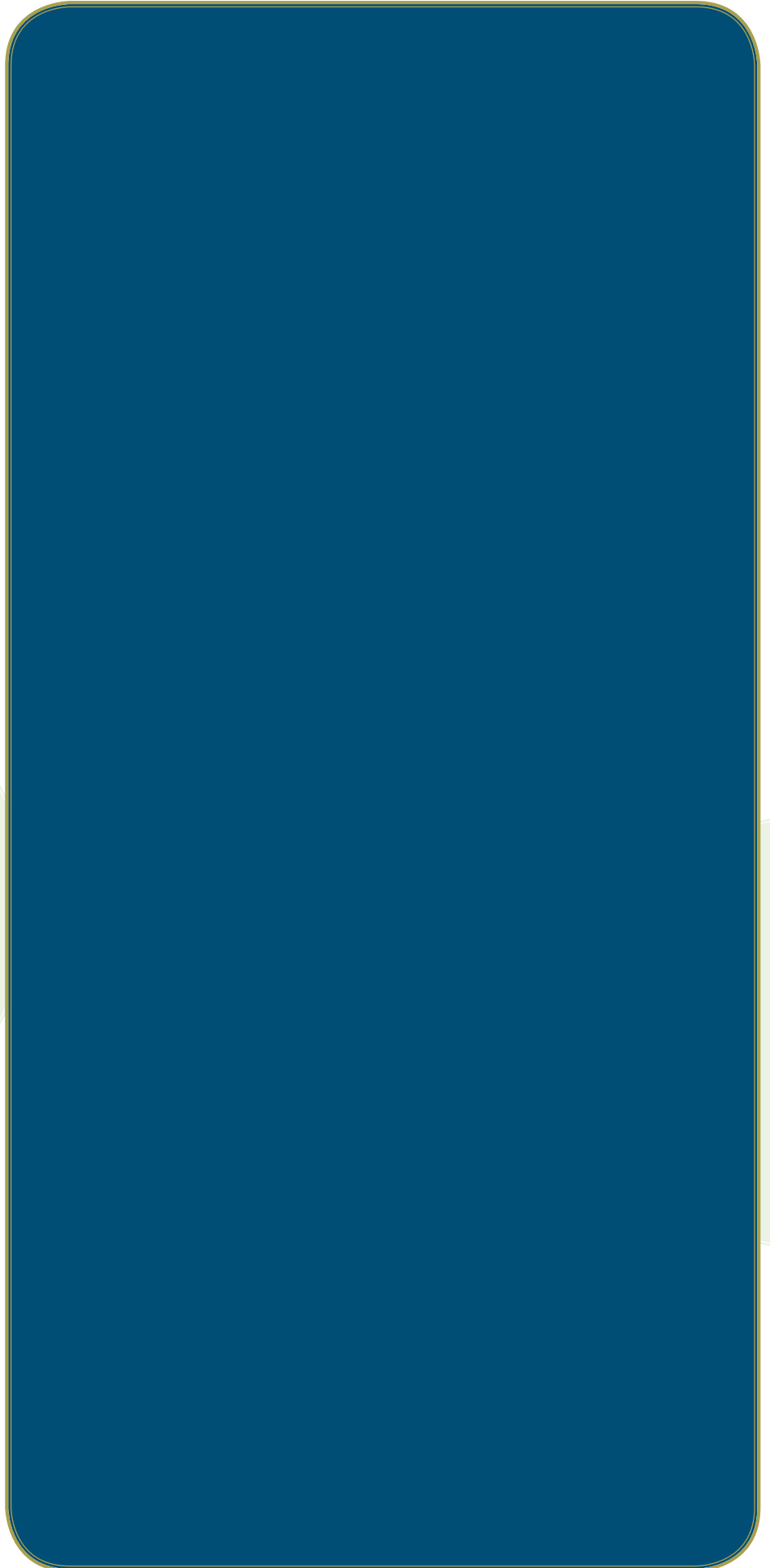
Key Achievements

- 86% of care experienced young people achieved a positive destination
- 94.2% of 16-19 year olds were in education, employment or training/



Outcome 3

Education, skills and training maximises opportunities for all





STEM made real as Roads Services and

Argyll and Bute Council's Infrastructure Design and Roads and Amenities Team shared their expertise with pupils from Ardrishaig Primary School.

as part of a STEM (Science, Technology, Engineering and Maths) Project.

The Council's roads staff gave a presentation to pupils on bridges and created several models to bring the topic to life. The models allowed them to understand the design principles of several bridge types, as well as the experience of constructing and testing them. A workshop gave the pupils hands on experience in constructing a culvert, a rope bridge, masonry arch bridge, reinforced concrete structure and cable-stayed bridge.

The children will now apply what they have learned when they design and build their own model bridges later in the term. This was a great opportunity for children to see how what they are learning can be applied to real life.



Adverse Childhood Experiences (ACEs)

A successful Health and Wellbeing Development day was held in May 2017 attended by 130 people to better understand the topic of Adverse Childhood Experiences (ACEs) and to consider Argyll and

Attendees explored the negative effects of ACEs to physical and mental health outcomes. This was followed by reporting on evidence based interventions which mitigated the effects of ACEs and how



There are excellent examples of Community Engagement which have taken place across the Partnership this year.

Case Study: Inspire Inveraray



com